

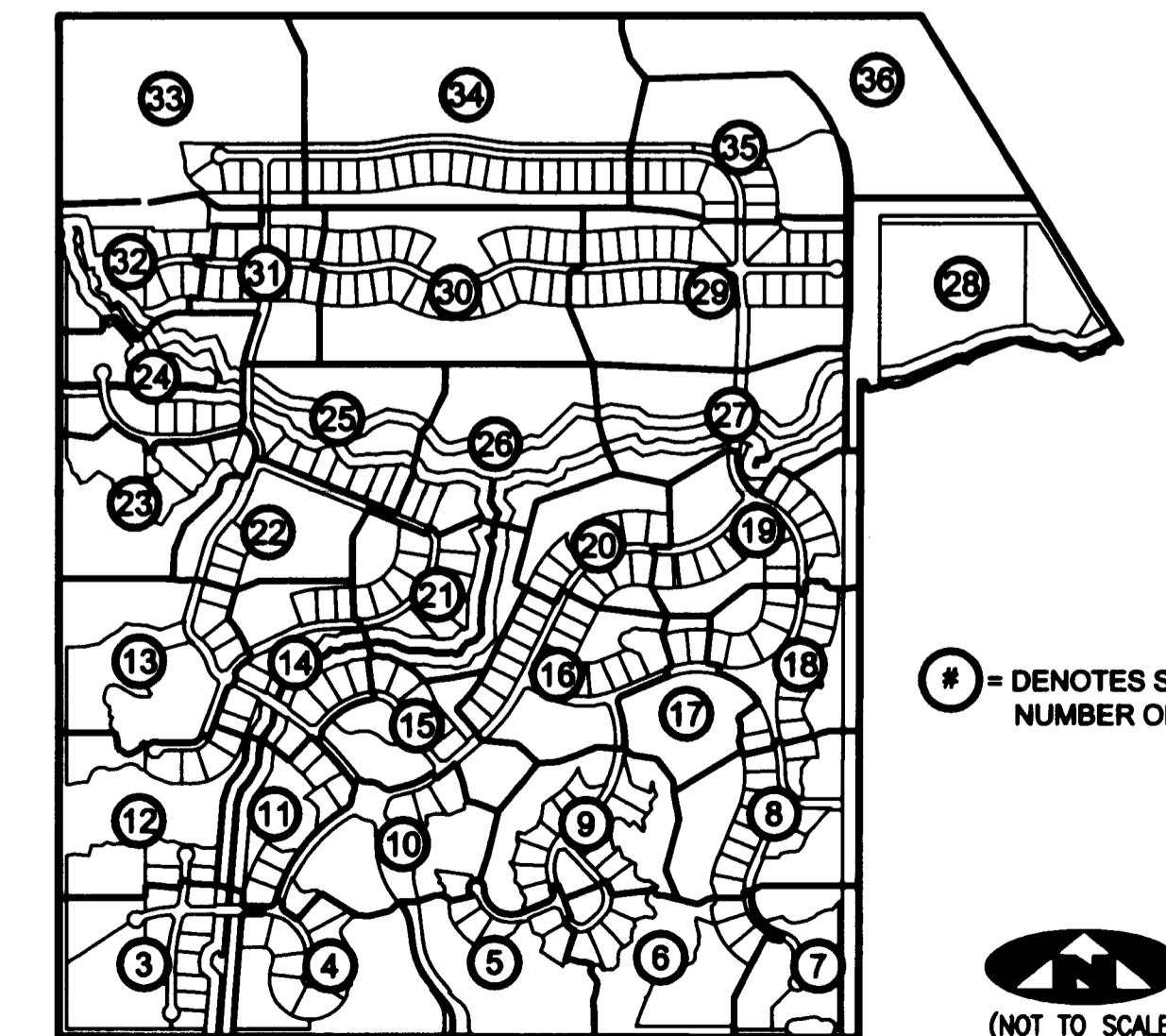
CURVE TABLE

C87	CA=67°14'49"	R=50.00'	L=58.88'	LCB=S42°00'45"W	CHD=55.37'
C103	CA=111°25'49"	R=50.00'	L=97.24'	LCB=N16°11'08"W	CHD=82.62'
C147	CA=82°55'29"	R=50.00'	L=72.37'	LCB=S12°12'38"E	CHD=66.21'
C148	CA=20°51'47"	R=118.00'	L=42.97'	LCB=N18°49'14"E	CHD=42.73'
C178	CA=77°00'04"	R=50.00'	L=67.20'	LCB=S89°23'32"E	CHD=62.25'
C184	CA=01°58'13"	R=425.00'	L=14.81'	LCB=N74°39'03"E	CHD=14.81'
C191	CA=141°14'34"	R=50.00'	L=123.26'	LCB=S02°48'54"E	CHD=94.33'

TANGENT TABLE

T-57	S16°24'02"W	25.32'
T-221	S22°11'37"E	36.85'
T-260	S53°40'22"E	42.79'
T-720	S81°21'22"E	46.34'
T-721	S88°12'14"E	39.19'
T-722	N05°53'40"W	52.35'
T-723	N29°25'45"E	19.83'
T-724	N75°07'08"E	60.06'
T-725	N03°36'48"E	72.85'
T-726	N85°52'42"E	8.62'
T-898	S62°26'45"E	48.67'
T-899	S88°22'46"E	21.83'
T-900	N72°06'26"E	32.90'
T-901	S30°53'30"E	77.74'
T-966	S18°53'42"W	22.00'
T-967	S36°11'04"E	51.89'
T-969	S10°58'40"W	15.77'
T-1025	S11°07'57"E	39.81'
T-1026	S46°30'49"W	38.89'
T-1027	S21°23'15"E	29.50'
T-1028	S20°01'21"E	50.52'
T-1613	S34°54'34"W	18.88'
T-1614	S76°27'36"E	39.40'
T-1615	S13°41'55"E	21.29'
T-1616	S18°53'42"W	31.66'
T-1617	S36°11'04"E	15.64'
T-1618	S66°03'17"E	22.24'
T-1620	S10°58'40"W	48.93'
T-1621	S34°15'51"W	19.95'
T-1622	N76°20'24"W	24.73'
T-1623	N81°43'16"W	22.12'
T-1624	S19°48'28"W	27.61'
T-1625	S83°24'56"E	37.11'
T-1626	S00°28'28"W	68.47'
T-1627	S14°22'27"W	26.37'
T-1628	S18°49'04"W	5.91'
T-1629	S73°33'30"E	32.42'
T-1630	S44°37'25"E	31.17'
T-1631	S00°30'59"E	39.04'
T-1632	S30°22'39"E	13.54'
T-1633	S43°40'17"W	41.27'
T-1634	S57°46'53"W	31.75'
T-1635	S81°21'22"E	42.04'
T-1636	S88°12'14"E	28.87'
T-1637	N75°07'08"E	10.01'
T-1638	N05°53'40"W	25.56'
T-1639	N29°25'45"E	43.14'
T-1640	N03°36'48"E	20.85'
T-1641	N87°58'34"W	54.37'
T-1642	N03°13'45"E	36.40'
T-1643	N28°34'48"E	39.87'
T-1644	N85°52'42"E	43.90'
T-1645	N05°38'49"W	44.97'
T-1646	N09°20'57"E	37.67'
T-1647	N13°15'27"W	49.74'
T-1648	N23°32'28"W	60.00'
T-1649	N06°56'37"E	56.07'
T-1650	N46°25'19"W	31.70'
T-1761	S26°28'56"E	39.53'
T-1762	S28°11'02"W	22.57'
T-1763	S58°16'50"E	41.41'
T-1764	S68°17'41"W	53.12'
T-1765	S11°07'57"E	39.81'
T-1766	S46°30'49"W	38.89'
T-1816	S25°36'10"E	40.98'
T-1817	S81°17'23"E	31.99'
T-1818	S54°00'44"E	35.86'
T-1819	S00°55'05"W	40.43'
T-1820	S03°35'00"E	38.03'
T-1821	S24°08'50"E	39.08'
T-1834	S89°54'45"E	48.85'
T-1835	S59°06'32"E	45.82'
T-1836	N72°06'26"E	41.50'
T-1837	S30°53'30"E	51.33'
T-1838	S10°22'43"W	40.97'
T-1839	S14°55'14"E	25.40'
T-1840	S46°45'35"W	32.60'
T-1841	S83°59'25"W	27.69'
T-1842	S61°42'20"W	39.34'
T-1843	S01°05'20"E	55.43'
T-1844	S24°51'14"W	29.27'
T-1845	S58°46'54"W	33.62'
T-1846	S56°32'49"W	30.94'
T-1847	N41°57'54"W	50.33'
T-1848	N08°35'22"E	38.05'
T-1849	N54°04'15"W	28.09'
T-1850	N71°24'02"W	34.57'
T-1851	S35°07'01"W	28.85'
T-1852	N09°10'28"W	37.81'
T-1853	N49°37'48"E	37.87'
T-1854	N39°27'49"W	71.43'
T-1894	S41°00'03"E	60.73'
T-1895	S62°26'45"E	56.38'
T-1896	S58°24'59"E	53.62'
T-1897	N83°18'20"W	53.19'
T-1898	S19°49'29"E	24.81'
T-1899	S43°22'16"W	23.68'
T-1900	S41°10'57"W	40.61'
T-1901	S21°41'37"E	9.49'
T-1902	S04°13'09"W	44.35'
T-1903	S74°30'19"E	66.29'

SHEET INDEX



# = DENOTES SHEET NUMBER OF 36



**LEGEND**

(R)	DENOTES A RADIAL LINE	R	DENOTES RADIUS DISTANCE	□	DENOTES A SET PERMANENT REFERENCE MONUMENT 4"x4" CONCRETE MONUMENT WITH DISK (LB 7344)
C/L	DENOTES A CENTERLINE	L	DENOTES ARC LENGTH DISTANCE	●	DENOTES A 5/8" IRON ROD AND CAP (LB 7344)
DE	DENOTES A PRIVATE DRAINAGE EASEMENT	CA	DENOTES CENTRAL ANGLE	○	DENOTES A SET PERMANENT CONTROL POINT CARRIAGE BOLT AND WASHER (LB 7344)
UE	DENOTES UTILITY EASEMENT	LCB	DENOTES LONG CHORD BEARING	⊙	DENOTES A FOUND PERMANENT CONTROL POINT CARRIAGE BOLT AND WASHER
LSE	DENOTES LIFT STATION EASEMENT	CHD	DENOTES CHORD DISTANCE		
MCAE	DENOTES MARTIN COUNTY ACCESS EASEMENT	ORB	DENOTES OFFICIAL RECORDS BOOK		
FM	DENOTES FORCE MAIN EASEMENT	.....	DENOTES TRACT LINE OF THE PLAT OF PALM CITY FARMS PLAT BOOK 6, PAGE 42.		
LME	DENOTES LAKE MAINTENANCE EASEMENT				

**SURVEYOR'S NOTES**

1. THE BASE BEARING, AS SHOWN HEREON, IS N89°58'48"W ALONG THE SOUTHLINE OF THE SOUTHWEST ONE-QUARTER OF SECTION 15, TOWNSHIP 38 SOUTH, RANGE 40 EAST.
2. IN THOSE INSTANCES WHERE UTILITY OR DRAINAGE STRUCTURES ARE CONSTRUCTED IN CONFLICT WITH THE PLATTED PERMANENT CONTROL POINT POSITION STRADDLERS MONUMENTED AS PERMANENT CONTROL POINTS WILL BE SET TO REFERENCE THE PLATTED POSITION.
3. LINES THAT INTERSECT CURVES ARE RADIAL UNLESS OTHERWISE NOTED.
4. THIS INSTRUMENT WAS PREPARED BY WM. R. VAN CAMPEN, PROFESSIONAL SURVEYOR AND MAPPER NO. 2424, IN AND FOR THE OFFICES OF ASSOCIATED LAND SURVEYORS, INC., 4152 WEST BLUE HERON BOULEVARD, SUITE 121, RIVIERA BEACH, FLORIDA, 33404

**ASSOCIATED LAND SURVEYORS, INC.**  
 4152 W. BLUE HERON BOULEVARD - SUITE 121  
 RIVIERA BEACH, FLORIDA 33404 LB 7344  
 PHONE: (561) 848-2102 FAX: (561) 844-9659 EMAIL: ALLSURVEY@AOL.COM

FILE: P260PLAT

FB:	WO.NO.: P260
SCALE: 1"=80'	DATE: 1/6/2005
DWN: KVC	SHEET 10 OF 36

